



## **DIRECTOR EC OFFICE PUBLISHER WITH Spectrum2 PRINTER INSTALLATION GUIDE**

### **DIRECTOR EC OFFICE PUBLISHER -- PC MINIMUM REQUIREMENTS**

- A Pentium® III or compatible personal computer @ 933 MHz or faster with Three (3) Free PCI slots.
- Windows 2000 Professional (service pack 4.0 or higher) or Windows XP (service pack 1.0a or higher)
- 1GB RAM (PC 133 specification - SDRAM or DDRAM)
- 1 Hard Disk Controller Adaptec BRAND Ultra 29160
- 1 18 GB SCSI 15,000rpm Ultra 160 SCSI Hard Drive (formatted NTFS) as follows:
- 1 Basic Partition for System (C:) & 2 5GB NTFS Partitions (D:)(E:) – Temp folder in root on each partition
- 1 Firewire 1394 Card (Supplied by MF DIGITAL)
- 1 Software Identifier Card (Supplied by MF DIGITAL) Computer needs 3.5" power connector for this card
- 1 external COM port (COM1 or COM2) - 2 ports needed if using Prism Plus or Spectrum2
- Network 100/10Mbps on Board
- Video 1024 x 768
- One Parallel Port

**THE DIRECTOR EC LOADER MUST BE INSTALLED ON COM PORT 2**

**THE DIRECTOR EC SOFTWARE MUST BE INSTALLED ON C:\ DRIVE**

MF DIGITAL  
121 Carolyn Blvd.  
Farmingdale, NY 11735  
001 631 249 9393  
[www.mfdigital.com](http://www.mfdigital.com)

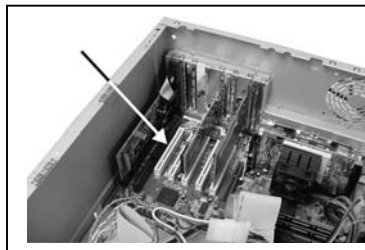
## Installing the Firewire Adapter & Software Identifier Cards

**Note:** You should never attempt to service a unit without ensuring proper anti-static protection. The use of a grounding strap, or other such grounding device, is advised. In addition, the internal configuration of your computer may be different from the computer pictured below.

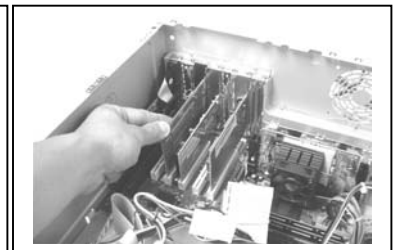
### Installing the Firewire Card

The DirectorEC Office Publisher requires one IEEE-1394 card.

1. Shut down the PC.
2. Turn the PC's power off.
3. Unplug the PC.
4. Remove the PC's cover as indicated in the PC's manual.
5. Locate an empty PCI slot, as seen in **(fig.1)**.
6. Install the firewire adapter card **(fig. 2)**.



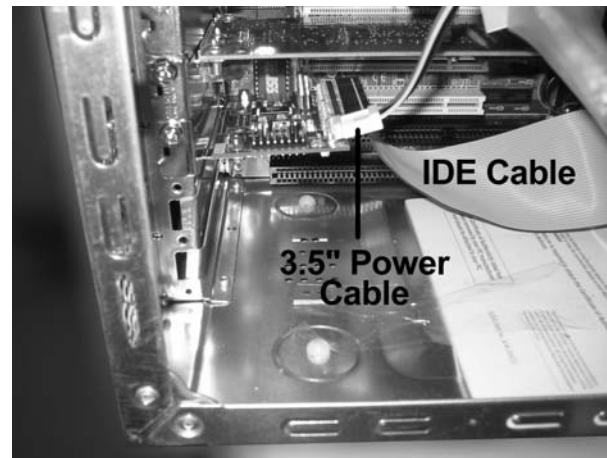
**(fig. 1)**



**(fig. 2)**

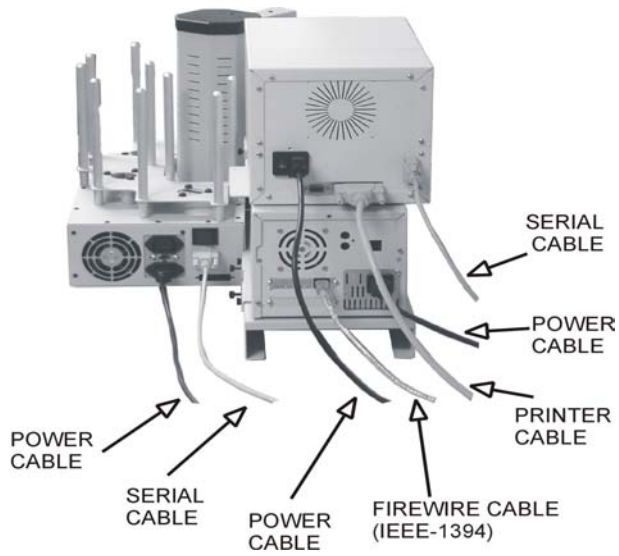
### Installing the Software Identifier Card

- a. If your PC is not OFF, perform the Windows shutdown now.
- b. Turn-off powers switch and unplug AC power from the wall.
- c. If the PC's cover has been re-installed, remove it now.
- d. Locate an Empty slot, Mount the Software Identifier card in slot as illustrated **(fig. 3)**.
- e. Connect the 3.5" Floppy type power cable such that the yellow wire is facing out.
- f. Using a 40 Pin EIDE cable, connect the card to the Secondary IDE Channel on your PC mother- board.
- g. Be sure PIN 1 (red wire) if facing AWAY from the motherboard, and next to the power connector on software identifier card **(fig. 3)**.

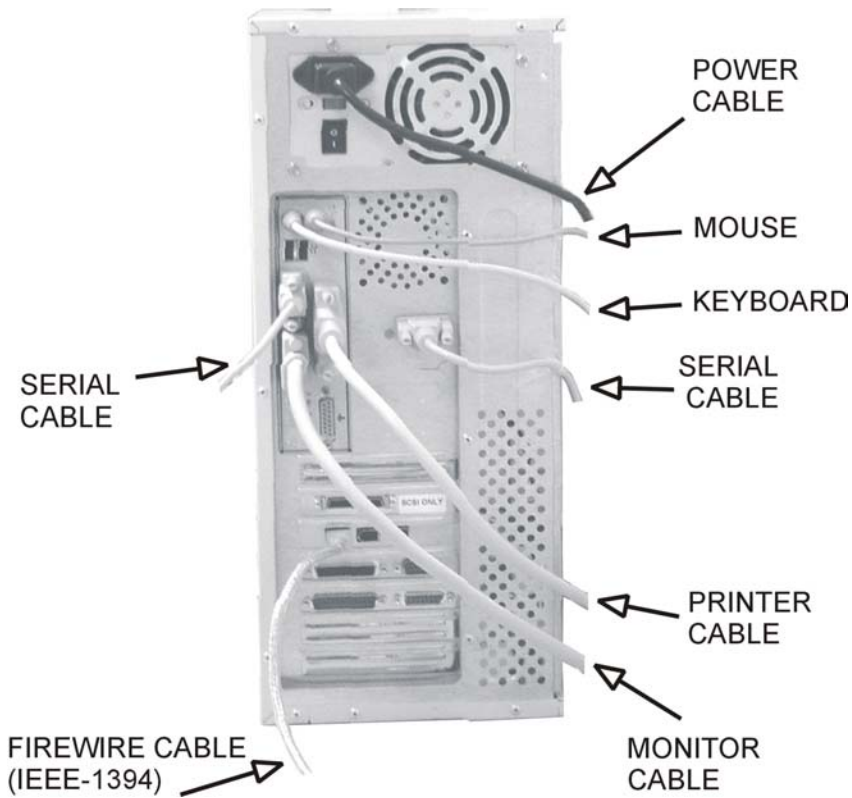


**(fig. 3)**

## Making the Connection



## PC Connection

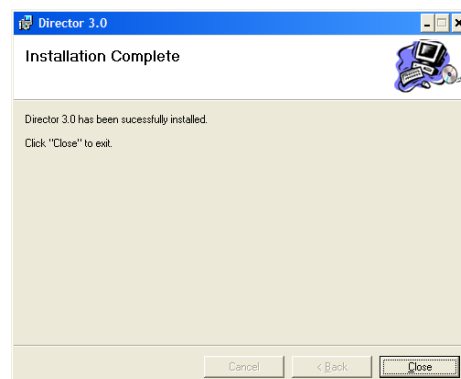
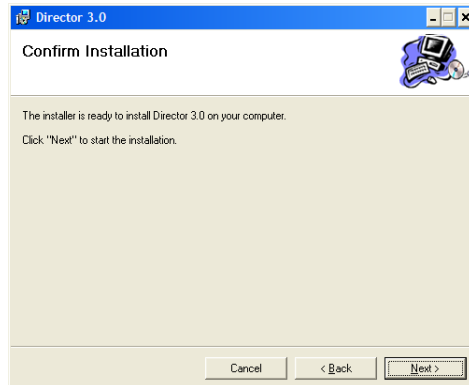
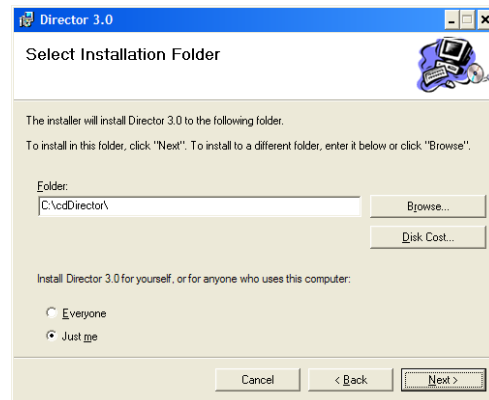


# Installing the Director EC Office Publisher Software [1]

## Note:

When installing the Director EC software on Windows XP you MUST install ODBC FoxPro drivers. See step #2 bellow.

1. Insert the Director EC Publisher software CD.
2. From the CD ROM drive of the computer, click *Director 3.0*
3. Click *Next* (**fig. 1**).
4. You MUST accept default folder and click *Next* (**fig. 2**).
5. Confirm Installation and click *Next* (**fig. 3**).
6. Installation completed click *Close* (**fig. 4**).

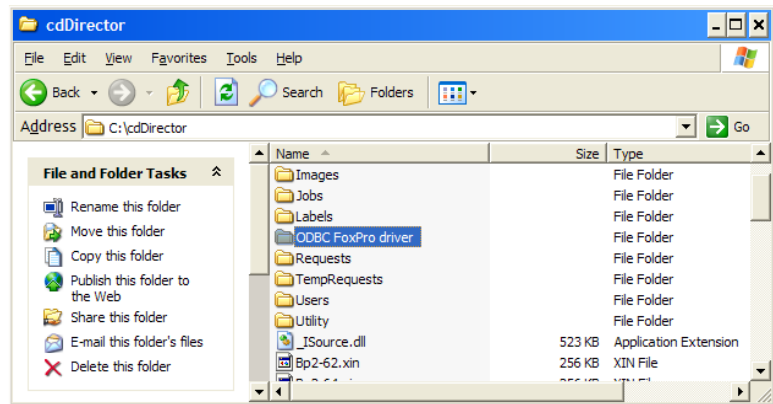


## Installing the Director EC Office Publisher Software [2]

**Note:**

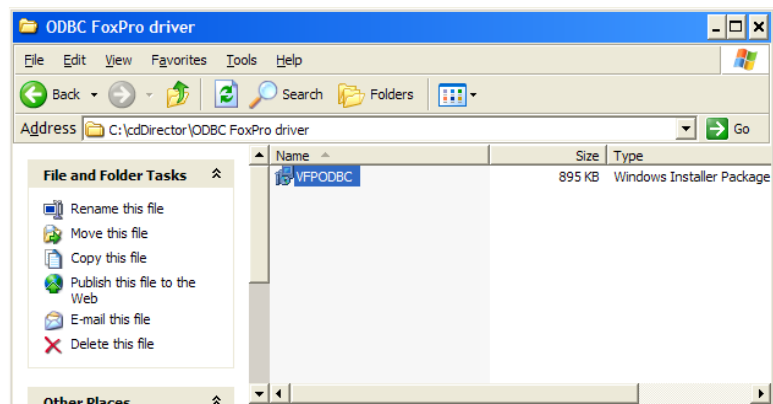
Windows XP MUST install ODBC FoxPro drivers before running Director 3.0

1. After installation of the Director EC software go to “c:\cdDirector\ODBC FoxPro Driver” folder. **(fig. 1)**



**(fig. 1)**

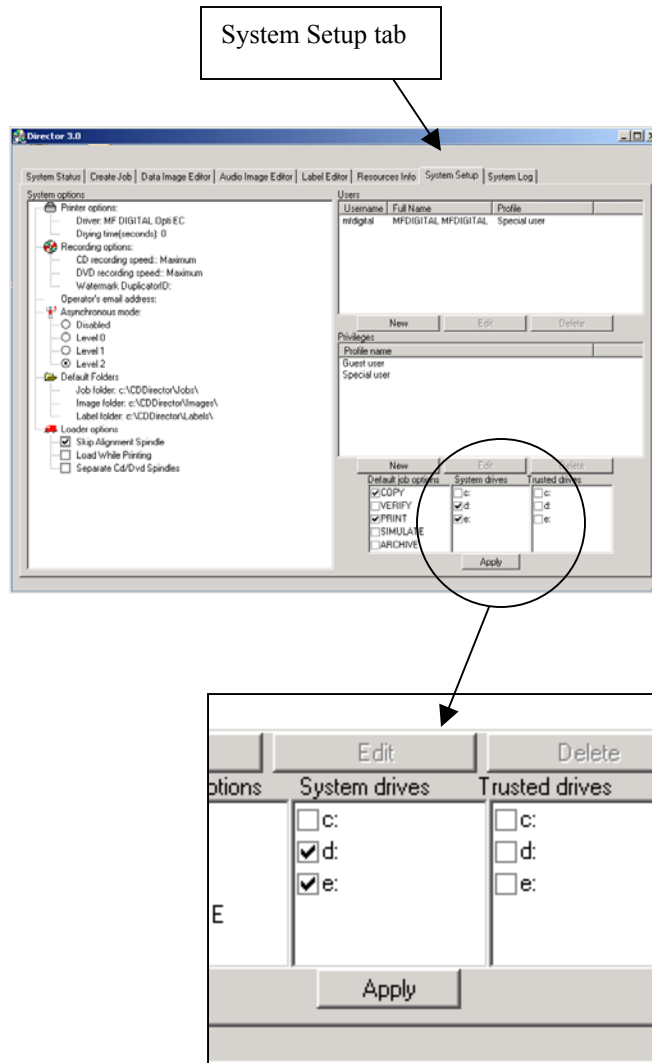
2. Double click the VFPODBC file. **(fig.2)**
3. Congratulations you have successfully installed Director EC Office Publisher software.



**(fig. 2)**

# Selecting system drives for Director EC

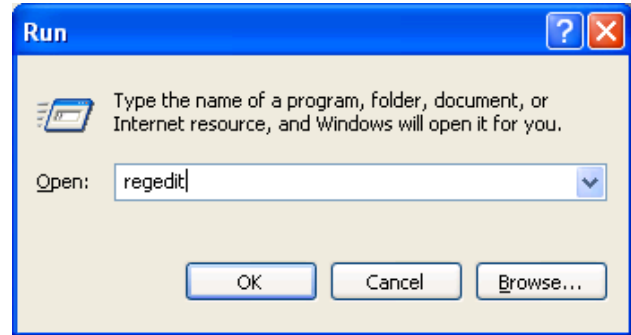
1. Open Director EC software.
6. Director EC software might prompt a message “System Drives Missing” click *OK*.
7. Go to “System Setup” tab and select system drives “D and E” (**fig. 1**)



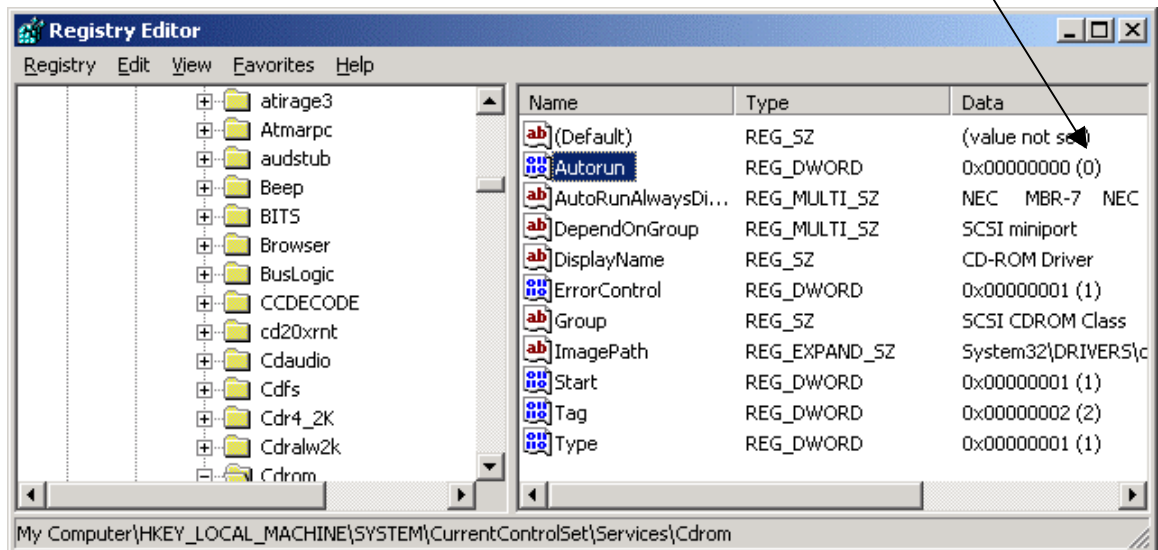
(fig. 1)

## Turning OFF Auto RUN on CD-ROM.

1. Go to “Start”.
2. Go to “Run”
3. Type in “**regedit**” then click **OK (fig.1)**
4. Navigate to “Autorun” registry following the path “My Computer\HKEY\_LOCAL\_MACHINE\SYSTEM\CurrentControlSet\Services\Cdrom” (**fig. 2**)
5. Set value in “Autorun” registry to zero if different.



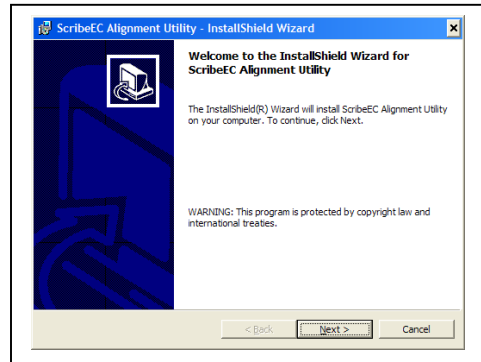
(fig. 1)



(fig. 2)

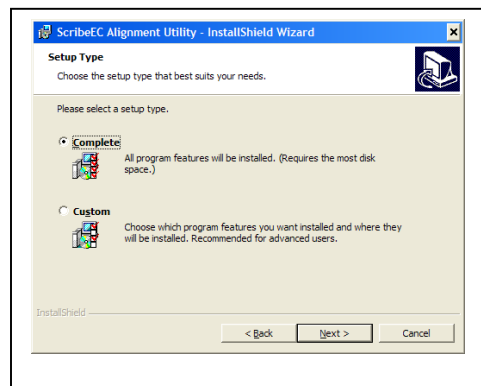
## Installing the Director EC Publisher Alignment Utility for aligning the Drive Tower and Printer

1. Insert the Director EC Office Publisher CD into the CD-ROM drive of your PC.
2. Click on **setup.exe** of the alignment utility and Click **OK** (**fig. 1**).

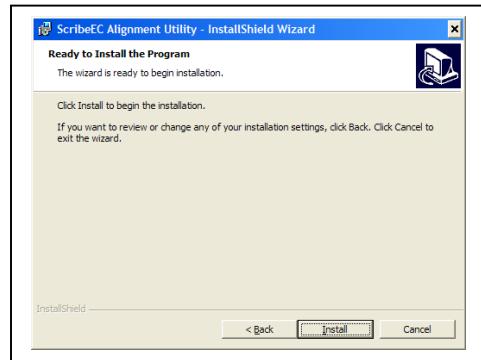


(fig. 1)

3. Click *Next* button to install complete version (**fig. 2**).
4. Click *Install* to start installation (**fig. 3**)



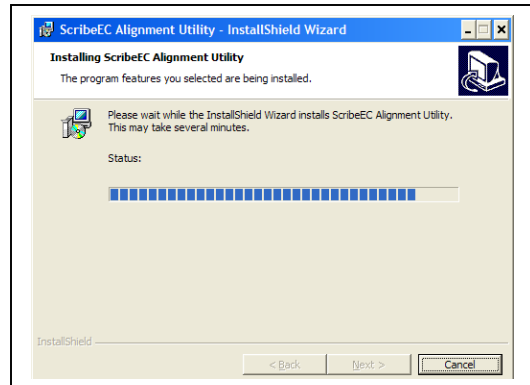
(fig. 2)



(fig. 3)

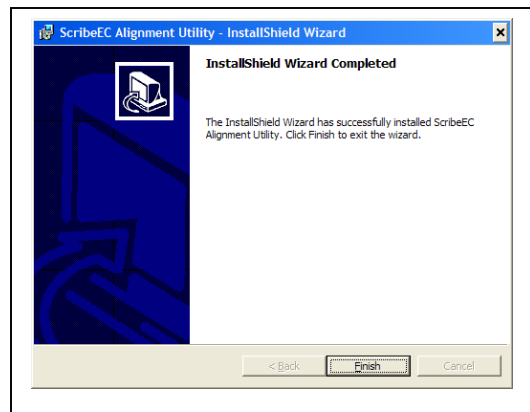
## ***Installing the Director EC Publisher Alignment Utility for aligning the Drive Tower and printer (cont.)***

5. A progress bar will appear (**fig. 4**).



**(fig. 4)**

6. Click *Finish* to finish installation. (**fig. 5**)



**(fig. 5)**

# Installing the Spectrum2 Printer Driver

1. Click Start-> Settings-> Printers
2. Click Add New Printer
3. The “Welcome to the Add Printer Wizard” window will appear (**fig 1**). Click Next.
4. In the “Local or Network Printer” window, uncheck the “Automatically detect installed printer” option, leaving the “Local printer attached to computer” option (**fig 2**) and click Next..
5. In the “Select a Printer Port” window, leave the default as LPT1 (**fig 3**) and click Next.
6. In the “Install Printer Software” window, click the “Have Disk” button (**fig 4**). You will then be prompted to “Install from Disk”, click the “Browse” button (**fig 5**). Select the location of the printer driver from your CD-ROM drive in the PC (**fig 6**).

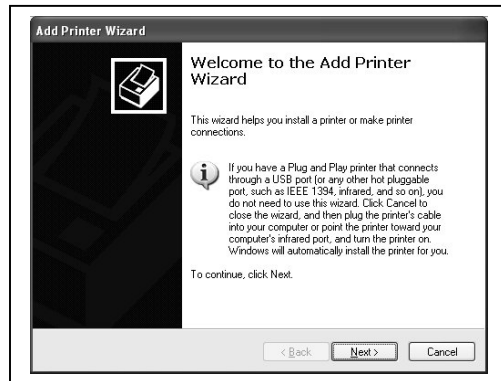


fig 1

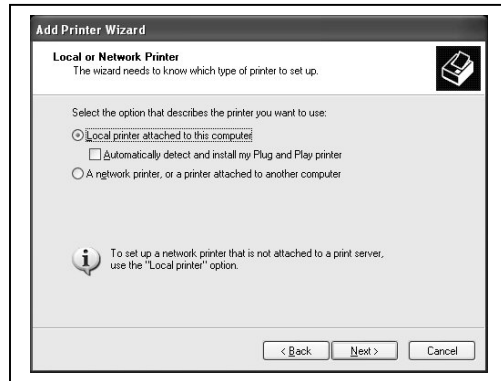


fig 2

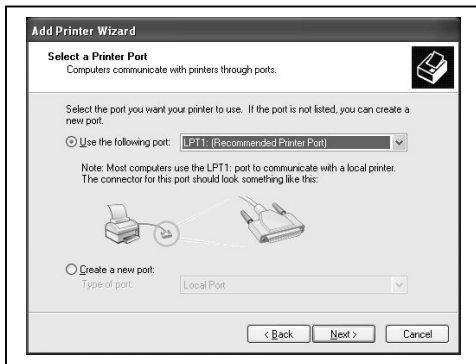


fig 3

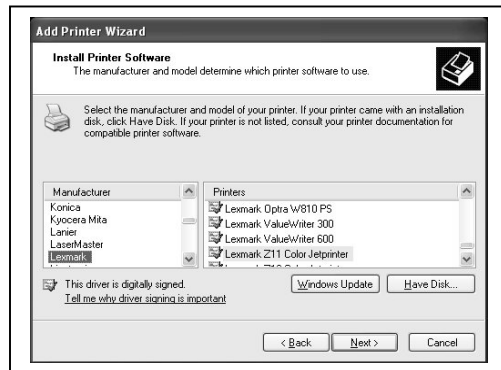


fig 4

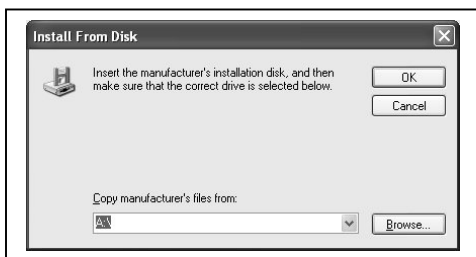


fig 5

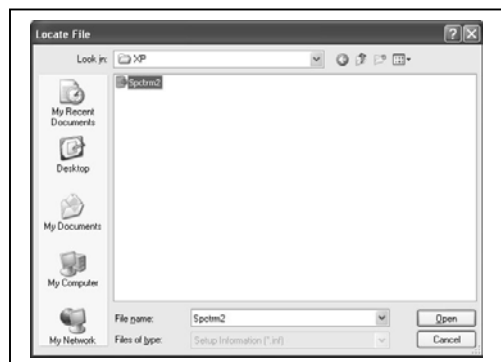


fig 6

## Installing the Spectrum2 Printer Driver (cont.)

7. After specifying the driver for the Spectrum 2 printer, the printer “Spectrum2” will appear in the “Add Printer Window” (fig 7). Click Next to continue.

8. In the “Name your Printer” window, leave the printer as the default name, and select the printer to be the default printer (fig 8) and click Next.

9. In the “Printer Sharing” window, select “Do Not Share the Printer” (fig 9) and click Next.

10. Say No to “Print Test Page” (fig 10) and click next.

11. The “Completing the Add Printer Wizard” window will appear (fig 11). Click Finish. After clicking finish, the Spectrum 2 printer driver will be installed. You will be asked to accept that the printer driver is not digitally signed by Microsoft, click Continue (fig 12). You have now successfully installed the printer.

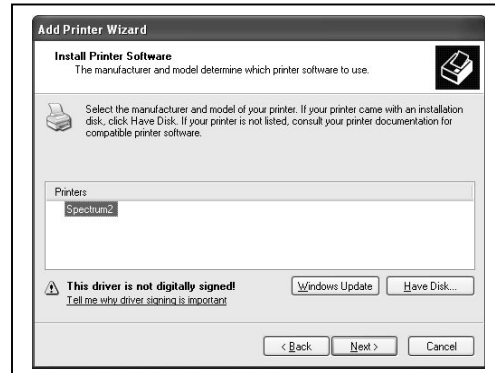


fig 7

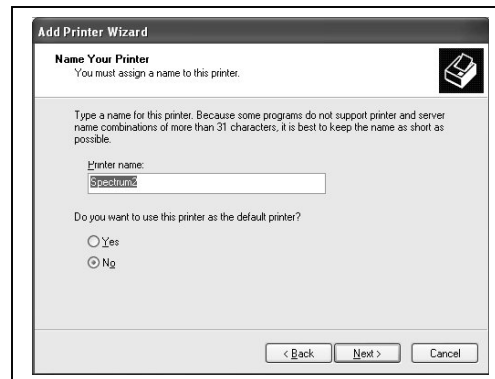


fig 8

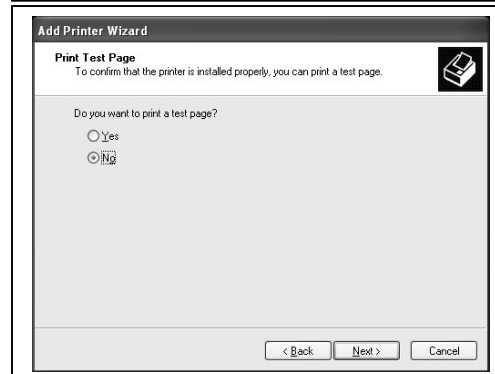


fig 10

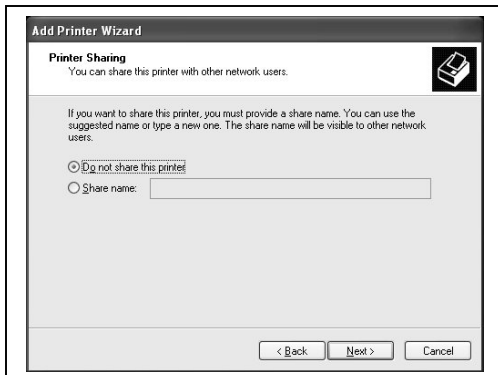


fig 9

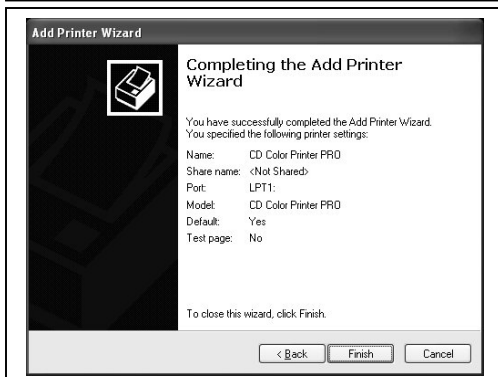


fig 11

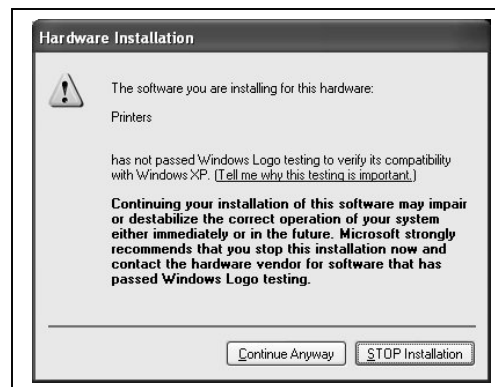


fig 12

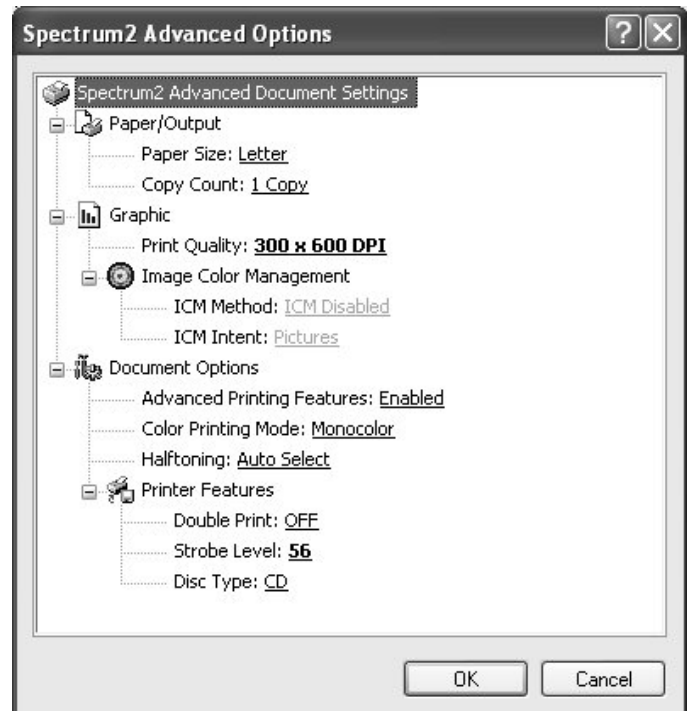
## Adjusting the Spectrum2 Printer Driver Settings

### Printing Preferences

To change the printing preferences for the Spectrum 2 printer, please do the following:

1. Go to Start-> Settings -> Printers
2. Right-click on the Spectrum 2 printer in the Printers Folder
3. Go to Printing Preferences
4. For the Scribe Program to use the printer effectively, please match the settings of your printer driver to the example on the right-side of this page.
5. To save settings, click Apply and OK to exit.

**\*\*\*NOTE: Any changes made to the printer driver settings, require a NEW PRN file to be made. If you change one of the settings, be sure to create a NEW PRN file.\*\*\***

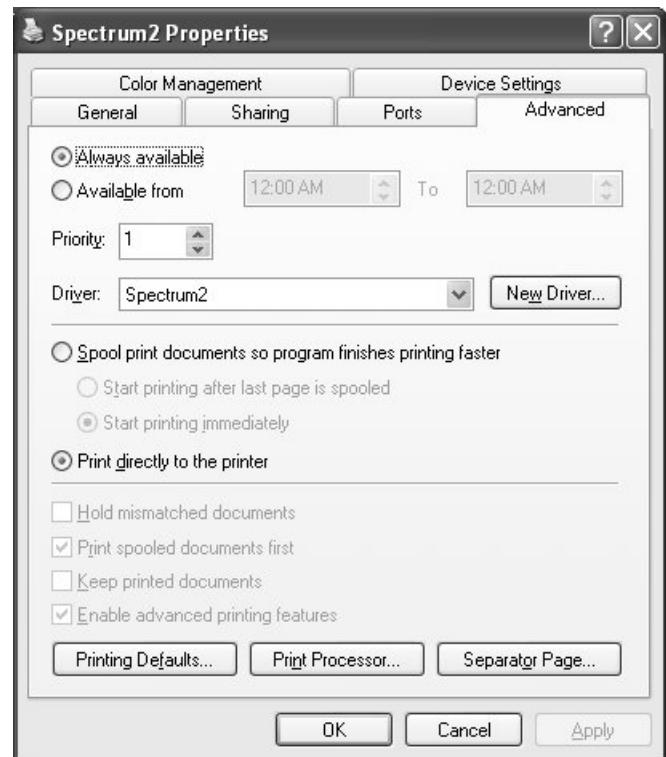


### Printer Spooling

It is important to disable printer spooling on the Spectrum 2 printer. To do so, please follow the steps below:

1. Go to Start-> Settings -> Printers
2. Right-click on the Spectrum 2 printer in the Printers Folder
3. Go to Properties
4. Go to the Advanced Tab
5. For the Scribe Program to use the printer effectively, please match the settings of your printer driver to the example on the right-side of this page.
6. To save settings, Click Apply and OK to exit.

**\*\*\*NOTE: Any changes made to the printer driver settings, require a NEW PRN file to be made. If you change one of the settings, be sure to create a NEW PRN file.\*\*\***

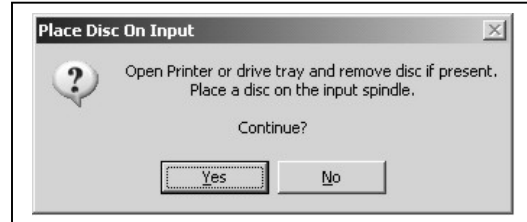


## Aligning the Drive Tower

1. From your Start Menu Open the *EC Alignment Utility* (**fig. 1**). It will be located in the folder designated when you installed the alignment utility. Choose COM Port 2, which the Director EC Loader is installed. Select all other printer types and **drive bay**. Click on *Perform Test*.
2. Follow the instructions by opening the top CD/DVD drive tray, and Clicking *Yes* (**fig. 2**). The picker arm will hover a disc over the drive tray, observe the discs position and make the adjustments to the drive tower (**fig. 3**).
3. Click *Yes* when you are satisfied with your adjustment (**fig. 4**).
4. The picker arm will then place the disc onto the drive tray. Follow the on screen instructions and click *OK* (**fig. 5**).
5. Once you are satisfied with the drive tower alignment, tighten the thumb-screws located on **both** sides of the drive tower (**fig. 6**).



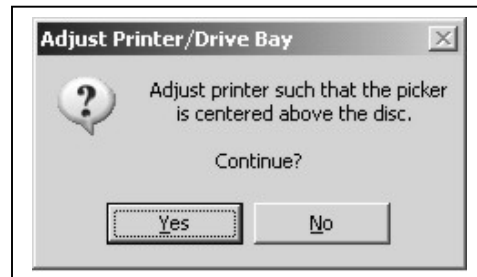
(fig. 1)



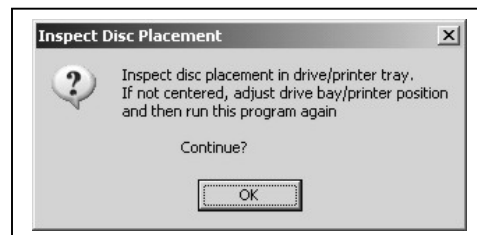
(fig. 2)



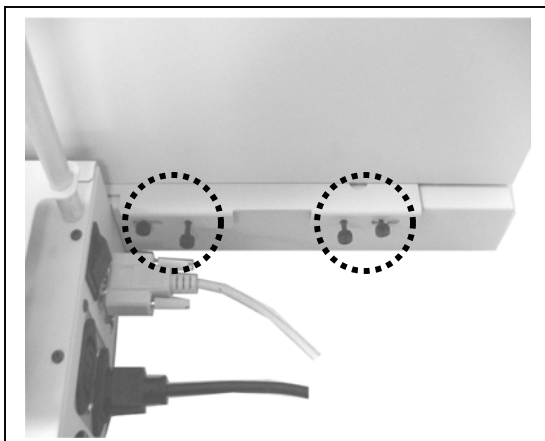
(fig. 3)



(fig. 4)



(fig. 5)

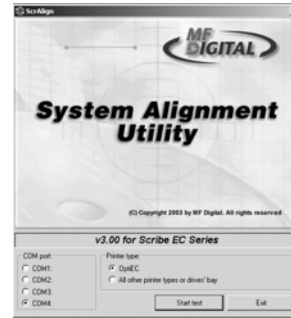


(fig. 6)

## Aligning the Spectrum2 Printer

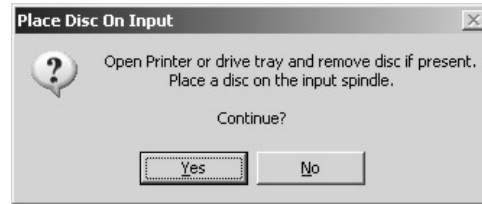
**Alert:**

Before starting the Alignment Utility, position the front end of the printer on the dotted line on the top of the drive bay.



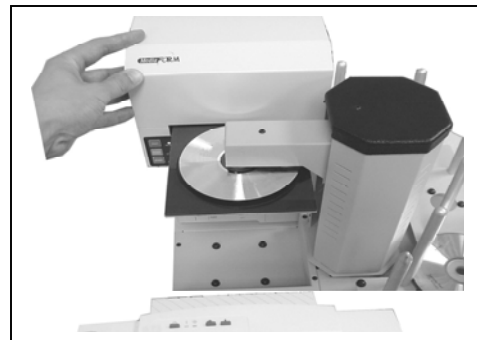
(fig 1)

1. From your Start Menu Open the *EC Alignment Utility* (fig. 1). It will be located in the folder designated when you installed the alignment utility. Choose corresponding COM Port connected to the Spectrum 2 printer. Select all other printer types and **drive bay**. Click on *Perform Test*.



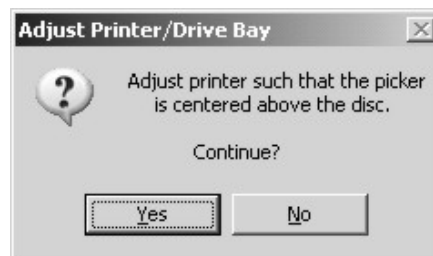
(fig 2)

2. Follow the instructions by opening the Spectrum 2 printer tray, and Clicking *Yes* (fig. 2). The picker arm will hover a disc over the printer tray, observe the discs position and make the adjustments to the printer (fig. 3).



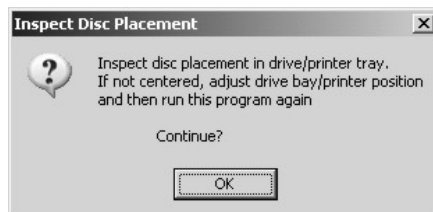
(fig. 3)

3. Click *Yes* when you are satisfied with your adjustment (fig. 4).



(fig. 4)

4. The picker arm will then place the disc onto the printer tray. Follow the on screen instructions and click *OK* (fig. 5).



(fig. 5)